

WHEN POWER & PERFORMANCE MATTERS

CHOOSE ACTIVE

AL918F

5 TONNE WHEEL LOADER



FEATURES

- 2 Speed Power Shift Transmission
- Integrated Air Conditioned and Heated Cabin
- Certified ROPS/FOPS Cabin with Pillar-less Wrap Around Windscreen
- Suspension Seat, Tinted Windows
- Single Lever Hydraulic Pilot Control with Shuttle Shift
- Full Powered Third Function Hydraulics (3rd Valve)
- Lift/Tilt Kick Out, Reversing Camera (Not covered under warranty)
- Standard Inclusions: Hydraulic Quick Hitch Fork Frame with Tynes, Bucket (with Bolt On Cutting Edge) and 4-In-1 Bucket
- Additional Buckets and Attachments Available: Sieve and Grain Buckets, Weighing Systems/Scales and Printers, etc... (all P.O.A)

DIMENSIONS

A: Length (Bucket on ground)	5,220 mm
B: Width (Outside tyres)	1,840 mm
C: Height	2,800 mm
D: Bucket width (GP BUCKET)	1700mm
E: Max Dump Height (Bucket Rolled Forward)	2,900 mm
F: Max Dump Height (Bucket Rolled Back)	4,020 mm
G: Max Height to Centre Pivot Pin (full lift)	3,460 mm
H: Centre to Centre Rear Axle	1,500 mm
I: Centre to Centre Front Axle	720 mm
J: Centre to Load frame	1,820 mm
L: Underbelly Clearance	280 mm
M: Front Wheel to Bucket Edge Breakout Force	48kn
Operating Weight/Safe Work Load	5.0/1.8 T
Bucket Capacity	0.80 m ³
Tyre Specification	20.5/70-16

HYDRAULICS

Type:	Single Lever Hydraulic Pilot Control
Pump	Gear Driven Hydraulic Pump
Flow Rate	70L
Working Pressure	14Mpa
Lifting Cycle Time	6 Seconds

ENGINE...

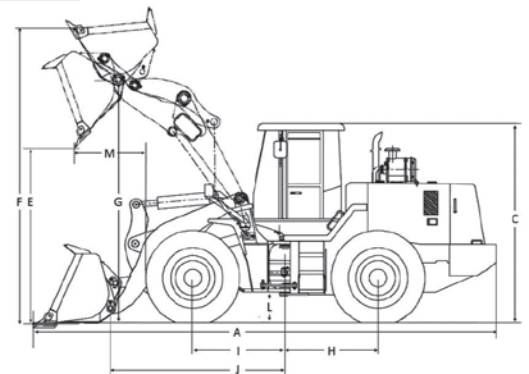
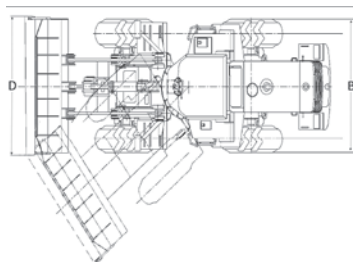
Model	Yunnei YN27GBZ
Type	Turbo Engine 4 Cylinder in-line Direct injection
Rated Power	56Kw (75HP)
Rated RPM	2400
Displacement	2.7L
Min. Fuel Consumption	5.5L/HR
Max. Torque	280 NM

TRANSMISSION...

Type	Planetary Powershift
Transmission Pump	Gear Driven Hydraulic Pump
Working Pressure	1.6Mpa
Speed/Shift	2 Forward/2 Reverse Max 22 KM/H

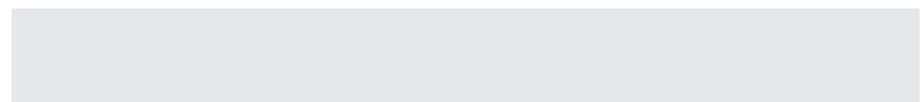
STEERING

Type	Full- Hydraulic Articulated Steering
Steering Orbitrol	BZZ5-250C
Steering Angle	25°
Working Pressure	10Mpa



ACTIVE MACHINERY
 28-30 Hydrive Close
 Dandenong South Victoria 3175
 Phone 03 9799 7707
 Mobile 0409 307 500
 Email sales@activemachinery.com.au

PURCHASE PRICE

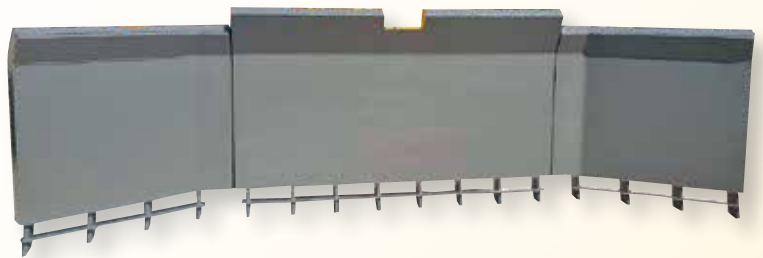


Attachments Not Included. Due to continued advancements in technology, Active Machinery are constantly improving their quality range. Therefore the information and pictures shown should be used as a guide only.

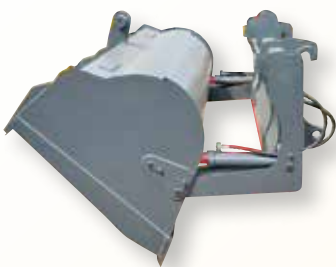
ATTACHMENTS



THREE METER / TEN FOOT STICK RAKE



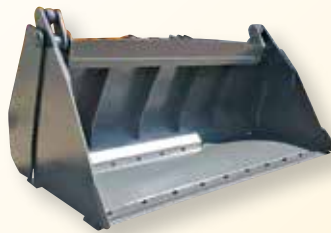
FIVE METER / SIXTEEN FOOT STICK RAKE



HIGH DUMP BUCKET



HAY FORKS



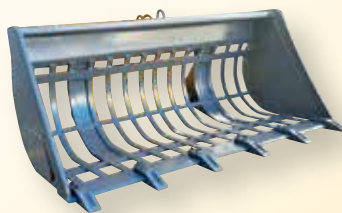
4 IN 1 BUCKET



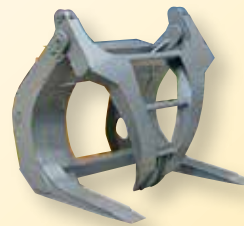
LIGHT MATERIALS BUCKET



REAR RIPPERS



SIEVE BUCKET



LOG GRAPPLE
(SINGLE FINGER)



LOG GRAPPLE
(TWIN FINGER)

WHEN POWER & PERFORMANCE MATTERS

CHOOSE ACTIVE



ACTIVE MACHINERY
28-30 Hydrive Close
Dandenong South Victoria 3175
Phone 03 9799 7707
Mobile 0409 307 500
Email sales@activemachinery.com.au