

WHEN POWER & PERFORMANCE MATTERS

CHOOSE ACTIVE

AL916C

5 TONNE WHEEL LOADER



FEATURES

- ◆ 4 Speed Transmission
- ◆ Integrated Air Conditioned & Heated Cabin
- ◆ Suspension Seat
- ◆ Single Lever Hydraulic Pilot Control
- ◆ Full Powered Third Function Hydraulics (3rd Valve)
- ◆ Standard Inclusions: Hydraulic Quick Hitch, Fork Frame with Tines, Bucket (with bolt on Cutting Edge) And 4 in 1 Bucket
- ◆ Additional Buckets and Attachments Available: Scales (Weighing System) & Printer, Hay Forks Etc...

DIMENSIONS

A: Length (Bucket on ground)	5520mm
B: Width (Outside tyres)	1960mm
C: Height	2850mm
D: Bucket width	1800mm
E: Max Dump Height (Bucket Rolled Forward)	3170mm
F: Max Dump Height (Bucket Rolled Back)	4590mm
G: Max Height to Centre Pivot Pin (full lift)	3900mm
H: Centre to Centre Rear Axle	1330mm
I: Centre to Centre Front Axle	890mm
J: Centre to Load frame	2010mm
L: Underbelly Clearance	320mm
M: Front Wheel to Bucket Edge Breakout Force	>70kn
Operating Weight/Safe Work Load	5.0/2.0 T
Bucket Capacity	0.85m ³
Tyre Specification	16/70-20

ENGINE...

Model	Yunnei 4102 Turbo Engine
Type	4 Cylinder in-line Direct injection
Rated Power	76Kw (104HP)
Rated RPM	2400
Displacement	3.90L
Min. Fuel Consumption	5.5L/HR
Max. Torque	280 NM

TRANSMISSION...

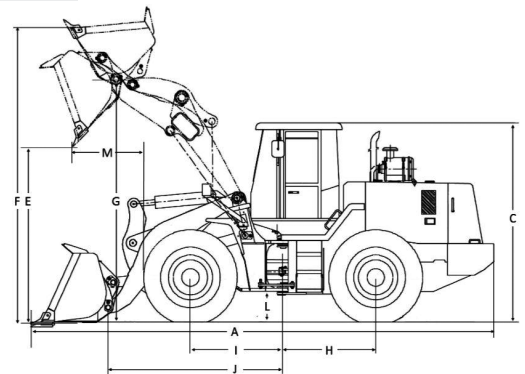
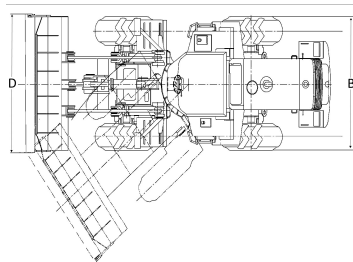
Type	Planetary Powershift
Transmission Pump	Gear Driven Hydraulic Pump
Working Pressure	1.6Mpa
Speed/Shift	4 Forward/4 Reverse Max 30 KM/H

STEERING

Type	Full- Hydraulic Articulated Steering
Steering Orbitrol	BZZ5-250C
Steering Angle	25°
Working Pressure	10Mpa

HYDRAULICS

Type:	Single Lever Hydraulic Pilot Control
Pump	Gear Driven Hydraulic Pump
Flow Rate	70L
Working Pressure	14Mpa
Lifting Cycle Time	6 Seconds



ACTIVE MACHINERY
28-30 Hydrive Close
Dandenong South Victoria 3175
Phone 03 9799 7707
Mobile 0409 307 500
Email sales@activemachinery.com.au

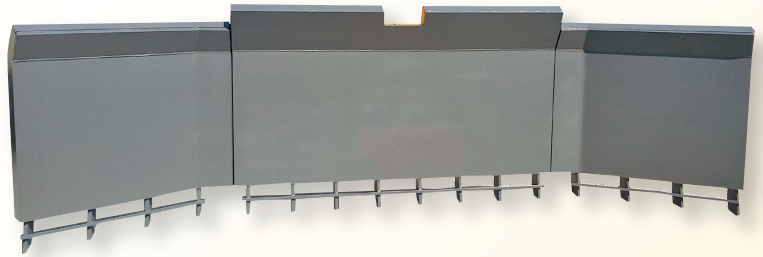
PURCHASE PRICE

Attachments Not Included. Due to continued advancements in technology, Active Machinery are constantly improving their quality range. Therefore the information and pictures shown should be used as a guide only.

ATTACHMENTS



THREE METER / TEN FOOT STICK RAKE



FIVE METER / SIXTEEN FOOT STICK RAKE



HIGH DUMP BUCKET



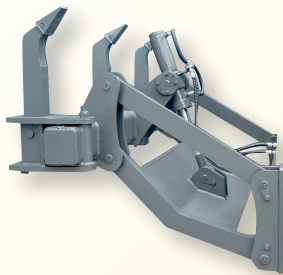
HAY FORKS



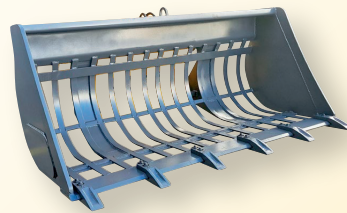
4 IN 1 BUCKET



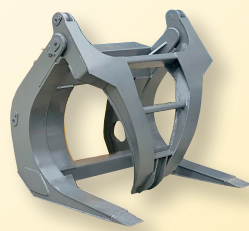
LIGHT MATERIALS BUCKET



REAR RIPPERS



SIEVE BUCKET



LOG GRAPPLE
(SINGLE FINGER)



LOG GRAPPLE
(TWIN FINGER)

WHEN POWER & PERFORMANCE MATTERS

CHOOSE ACTIVE



ACTIVE MACHINERY
28-30 Hydrive Close
Dandenong South Victoria 3175
Phone 03 9799 7707
Mobile 0409 307 500
Email sales@activemachinery.com.au